

Bituthene® 8000 HC

Grey, solar reflective, flexible self-adhesive water and vapour proof membrane for sub-structures in hot climates.

Advantages

- **Water and vapour proof** - provides protection for Grades 2, 3 and 4 BS 8102:1990.
- **Chemically resistant** - provides effective external protection against aggressive soils, contaminated ground water and hydrocarbons in suspension.
- **Hot climate grade** - specially formulated for elevated temperatures of up to 55°C.
- **Easier handling in hot weather** - over 20% reduction of solar heat absorption.
- **Superior performance** - 70 m hydrostatic pressure resistance with ultra low moisture transmission rate.
- **Non-metallised film** - not vulnerable to chemical attack.
- **Unique composite film** - engineered for strength, flexibility and a smooth finish.
- **Facilitates quality assured installation** - printed overlap line ensures minimum laps; light grey colour highlights accidental damage for simple patch repairs.
- **System Compatibility** - can be combined with Preprufe® pre-applied membranes, Bituthene® LM, and Hydroduct® Sheets for system solutions.

Description

Bituthene® 8000 HC combines the proven Bituthene® adhesive technology with a unique, grey coloured carrier film to provide superior performance and easier installation. It can be used horizontally or vertically to protect basements and other critical sub-structures from the effects of aggressive ground conditions and water tables.

Bituthene 8000 HC has been tested to withstand more than 70 m head of water.

The membrane is printed with the Bituthene® logo to aid identification plus an overlap line at each edge to ensure the 50 mm minimum laps. Bituthene 8000 HC is extremely tough but any accidental damage which would otherwise be missed, is made visible by the black compound showing through the light grey film. This can be simply repaired with a patch of Bituthene 8000 HC.

Ancillary Products

Primer B1

Primer B1 is used to prepare vertical and sloping surfaces and suspended slabs.

Bituthene® LM

Waterproof continuity at some angles and at penetrations is provided by Bituthene LM two component, chemically curing, liquid applied detailing compound.

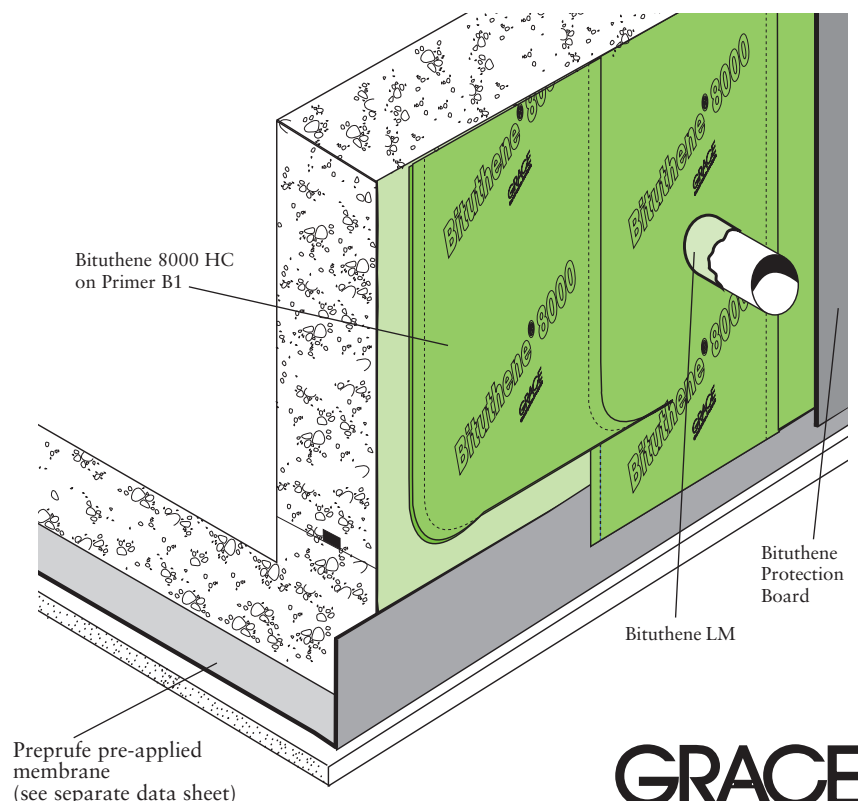
Bituthene® Protection Boards

Damage from following trades is prevented by laying horizontal Bituthene® Protection Boards. Vertical faces are protected against backfill damage by using Servipak, Hydroduct® Sheet or other boards recommended by Grace, located with Bitutape double sided tapes.

Installation

All surfaces except those below ground bearing slabs should be primed with one coat of Primer B1 applied by roller or brush at a rate of 10m² per litre. Bituthene 8000 HC shall be laid by peeling back the protective release paper and applying the adhesive face onto the prepared surface.

Bituthene LM to be applied at all internal and external corners, pipe penetrations etc. prior to applying the overall membrane.



Supply

Bituthene® 8000 HC	1 m x 20 m roll (20 sq m) Weight 32 kg
Palletisation	20 rolls per pallet
Storage	Store upright in dry conditions below +40°C
Primer B1	5, 25 litre drums
Coverage	10-12 sq m per litre depending upon method of application, surface porosity and ambient temperature
Ancillary Products	
Bituthene® LM	5.7 litre packs
Lap Roller	Unit
Bituthene® protection boards	3 mm & 6 mm thick 2.0 m x 1.0 m
Bitutape	30 mm x 12 m roll
Pak Adhesive	5 litre can

Physical Properties

	Typical Value	Test Method
Thickness	1.5 mm	
Hydrostatic Head Resistance	> 70 m (note 1)	ASTM D5385-93
Water Vapour Transmission Rate	0.06 g/m ² /day	ASTM E96-92
Methane Permeability	3.89 ml/m ² /day (note 2)	Queen Mary & Westfield College, University of London
Tensile Strength (Carrier Film)	Longitudinal 48.4 N/mm ² Transverse 45.4 N/mm ²	ASTM D638-91
Puncture Resistance	280N	ASTM E154-93

Note 1: Test carried out on an overlap crossing a post formed crack.

Note 2: Typical value for BRE recommended minimum standard (BRE Report 212) is 360 ml/m²/day.

Bituthene 8000 HC complies with the relevant section of the following national standards: BS 8102:1990, Building Regulations (England and Wales) 1991 (amended 1994) clause C4. Building Regulations (Northern Ireland) 1994 (amended 1995) clause B2. Building Standard (Scotland) Regulations 1990, Regulation B2.1, G2.6.

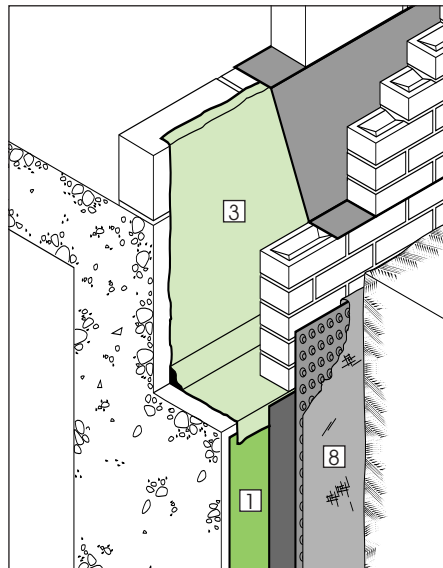
Bituthene 8000 HC should be brushed onto the surface to ensure good initial bond and exclude air. Adjacent rolls are aligned using printed lines and overlapped 50mm minimum at side and ends and well rolled with a firm pressure, using a Lap Roller to ensure complete adhesion and continuity between the layers. On high walls it may be necessary to batten fix the membrane to prevent slippage.

Repairs

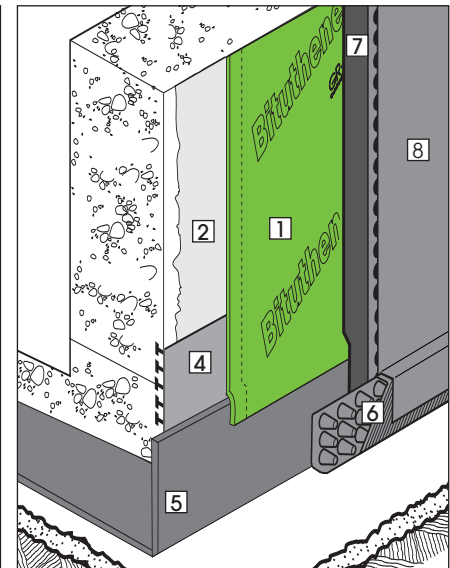
Damaged areas to be repaired by patching with an oversize patch applied to a clean dry surface extending 100mm beyond damage and firmly rolled.

Specification

Bituthene 8000 HC preformed membrane with Bituthene LM at corners and penetrations shall be laid onto smooth concrete blinding and/or vertical concrete walls by applying the preformed membrane, sticky side downwards to give well rolled 50mm overlaps. Vertical or inclined surfaces and suspended slabs to be primed with Primer B1 applied by roller or brush to achieve an even cover of the surface. Allow to dry before applying the membrane. Materials to be supplied by Grace Construction Products Limited, Ajax Avenue, Slough, Berkshire, SL1 4BH, United Kingdom, and laid strictly in accordance with manufacturer's instructions.



Typical ground level termination detail



Typical base slab/wall junction

Health and Safety

There is no legal requirement for a Material Safety Data Sheet for Bituthene 8000 HC, Bituthene Protection Boards, Bitutape. For health and safety questions on these products please contact Grace Construction Products Limited.

For Primer B1, Bituthene LM and Pak Adhesive read the product label and Material Safety Data Sheet (MSDS) before use. Users must comply with all risk and safety phrases. MSDS's can be obtained from Grace Construction Products or from our web site at www.graceconstruction.com.

Key to diagrams:

- 1 Bituthene 8000
- 2 Primer B2
- 3 Bituthene LM
- 4 Serviseal waterstop
- 5 Preprufe
- 6 Hydroduct Coil
- 7 Bituthene Protection Board
- 8 Hydroduct 200

Details shown are typical illustrations only and not working drawings. For assistance with working drawings and additional technical advice please contact Grace Technical Services

European Patent Application No. 90300244.2

web Visit our web site at www.graceconstruction.com

Grace Construction Products Ltd, Ajax Avenue, Slough, Berkshire SL1 4BH United Kingdom Tel +44 (0)1753 692929 Fax +44 (0)1753 691623

Adcor, Aerofil, BETEC, Bituthene, Hydroduct, Insupak, Korkpak, Paraflex, Paraseal, Preprufe, Procor, Serviseal, Servidek, Servigard, Servijoint, Servimastic, Servipak, Servirufe, Serviseal, Servistrip, Servitite, Vertigard and Vertiseal are registered trademarks of W R Grace & Co.-Conn.

Adprufe, Armourtape, Bitushield, Bitustik, Bitutape, Hydropaste, Pak Adhesive, PVC Edgetie, Serviband, Serviflex, Servitape, Slipstrip, and Solarshield are trademarks of W R Grace & Co.-Conn.

The information given is based on data and knowledge considered to be true and accurate and is offered for the user's consideration, investigation and verification. Since the conditions of use are beyond our control we do not warrant the results to be obtained. Please read all statements, recommendations or suggestions in conjunction with our conditions of sale including those limiting warranties and remedies which apply to all goods supplied by us. No statement, recommendation or suggestion is intended for any use which would violate or infringe statutory obligations or any rights belonging to a third party.

Copyright 2006. Grace Construction Products Limited.

Printed in England - 05.06- Ref. WM002BHC

GRACE
Construction Products